

FEATURES & SPECIFICATIONS

INTENDED USE

Ideal where high brightness and good illumination levels are required such as retail, light industrial and warehouses.

ATTRIBUTES

Fixture can be assembled with snap together components and requires no tools. Available in one lamp or two lamp configuration.

CONSTRUCTION

Heavy-duty channel, die-formed from Code-gauge steel.

Sturdy channel cover secured by captive quarter-turn latch for easy access to wireway.

Combination endplate/channel connector furnished with each fixture.

FINISH

Five-stage iron phosphate pretreatment ensures superior paint adhesion and rust resistance. Painted parts finished with high-gloss, baked white enamel.

ELECTRICAL SYSTEM

MVOLT ballasts are NEMA Premium®/CEE qualified ballasts. Full light output - reduced energy. Less than 10% THD. Multi-volt operation, 120-277V.

120V ballasts are thermally protected, resetting, Class P, LPF, non-PCB, UL Listed, CSA Certified. Rapid-start ballasts are sound rated A.

INSTALLATION

For unit or row installations, surface or suspended mounting.

LISTING

UL listed to US and Canadian safety standards. Optional: Mexico NOM.

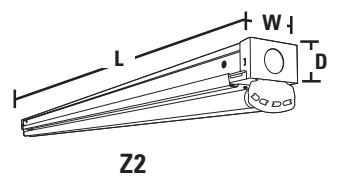
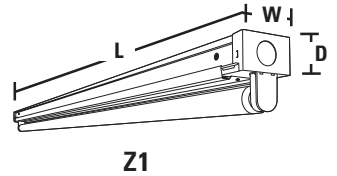
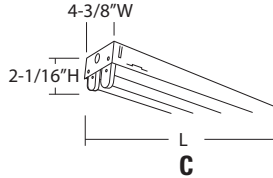
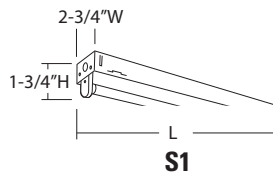
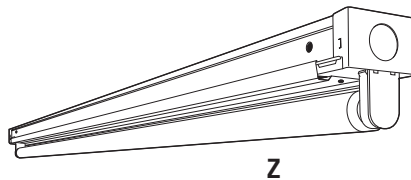
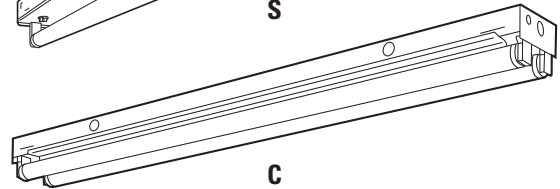
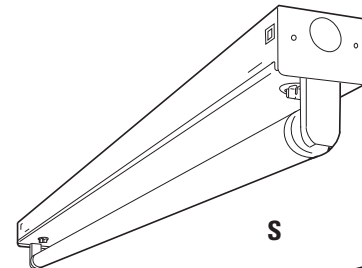
WARRANTY

Fixtures, including ballasts, are covered by Lithonia Lighting 24-month warranty against mechanical defects in manufacture.

Specifications subject to change without notice.

Catalog Number	
Notes	Type

Strip Lights



ORDERING INFORMATION

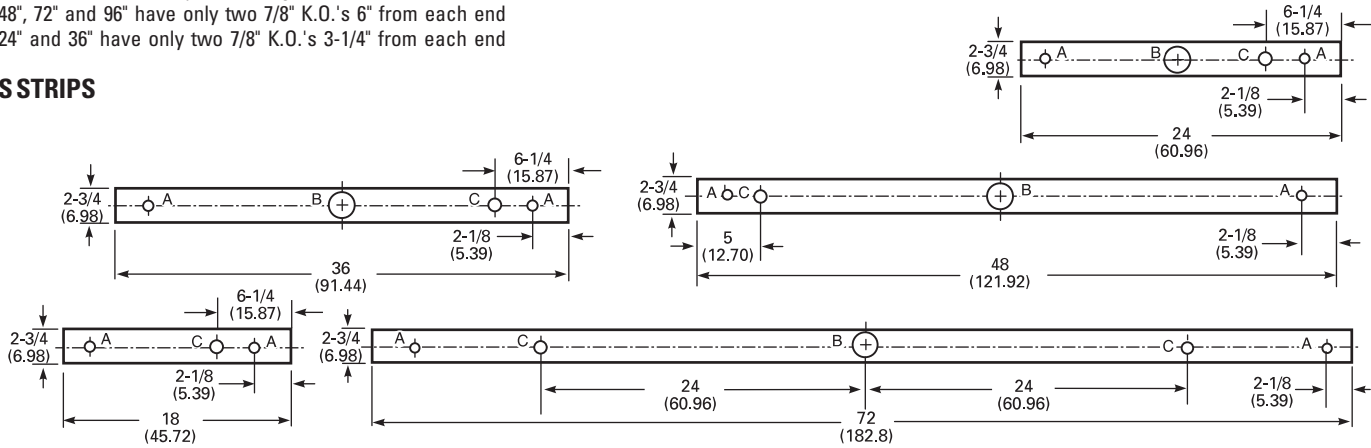
Catalog Number	UPC	Description	# of Lamps	Length	Wattage	Voltage	Ballast Type	Lamp Included	Pallet Qty.	Standard Carton Qty.
C232 MV	745975079711	T8 general-purpose strip	2	48"	32	120-277	NEMA Premium, instant start	N	99	1
TC232 MV	745975080809	T8 general-purpose strip	4	96"	32	120-277	NEMA Premium, instant start	N	99	1
C225 MV	745975081219	T8 general-purpose strip	2	36"	25	120-277	NEMA Premium, instant start	N	99	1
C217 MV	745975081493	T8 general-purpose strip	2	24"	17	120-277	NEMA Premium, instant start	N	198	1
C296	745973789766	T12 general-purpose strip	2	96"	75	120	Electronic, rapid start	N	99	1
C296T8 MV	745977076145	T8 general-purpose strip	2	96"	75	120-277	NEMA Premium, instant start	N	99	1
Z117 MV	745976682675	T8 low-profile strip	1	24"	17	120-277	NEMA Premium, instant start	N	448	1
Z125 MV	745976682705	T8 low-profile strip	1	36"	25	120-277	NEMA Premium, instant start	N	224	1
Z132 MV	745976682736	T8 low-profile strip	1	48"	32	120-277	NEMA Premium, instant start	N	224	1
TZ132 MV	745976682767	Tandem, T8 low-profile strip	2	96"	32	120-277	NEMA Premium, instant start	N	224	1
Z217 MV	745976682781	T8 low-profile strip	2	24"	17	120-277	NEMA Premium, instant start	N	448	1
Z225 MV	745976682927	T8 low-profile strip	2	36"	25	120-277	NEMA Premium, instant start	N	224	1
Z232 MV	745976682941	T8 low-profile strip	2	48"	32	120-277	NEMA Premium, instant start	N	224	1
TZ232 MV	745976682989	Tandem, T8 low-profile strip	4	96"	32	120-277	NEMA Premium, instant start	N	224	1
S115	745973962992	T12 narrow strip	1	18"	15	120	Electronic, rapid start	N	288	1
S120	745973790212	T12 narrow strip	1	24"	20	120	Electronic, rapid start	N	288	1
S130	745973962985	T12 narrow strip	1	36"	30	120	Electronic, rapid start	N	168	1
S140	745973790250	T12 narrow strip	1	48"	40	120	Electronic, rapid start	N	144	1

Strip Lights

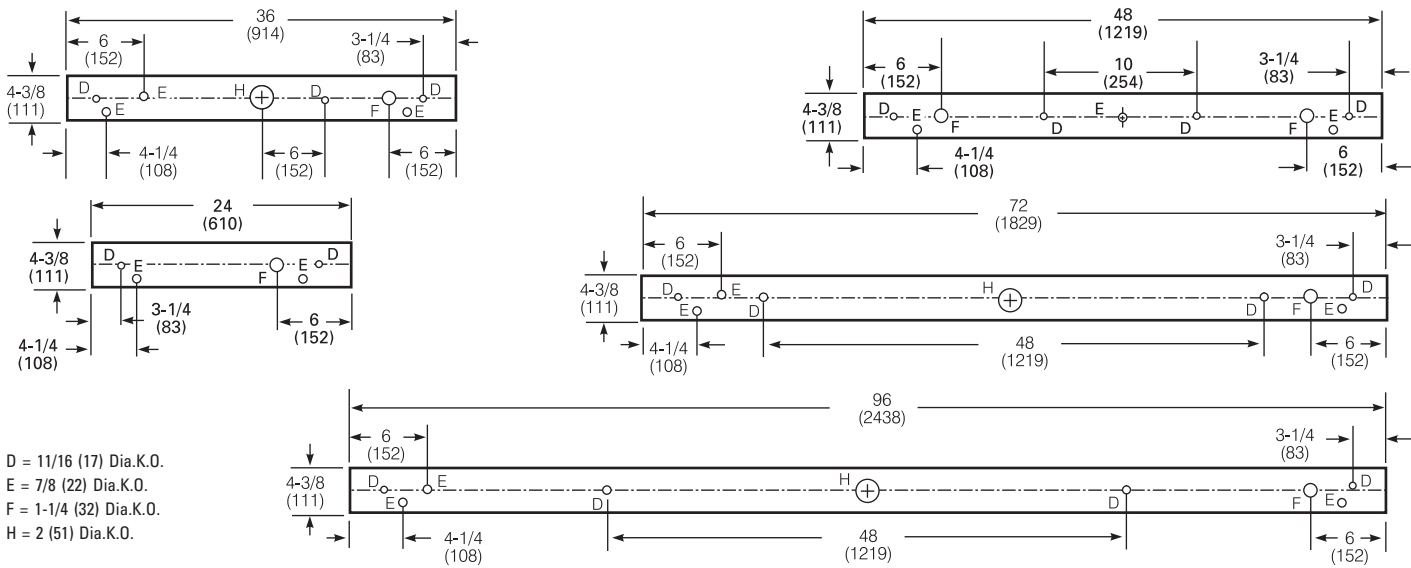
DIMENSIONS

Inches (millimeters). Subject to change without notice.
 48", 72" and 96" have only two 7/8" K.O.'s 6" from each end
 24" and 36" have only two 7/8" K.O.'s 3-1/4" from each end

SSTRIPS



CSTRIPS



D = 11/16 (17) Dia.K.O.
 E = 7/8 (22) Dia.K.O.
 F = 1-1/4 (32) Dia.K.O.
 H = 2 (51) Dia.K.O.

PHOTOMETRICS

Calculated using the zonal cavity method in accordance with IESNA LM41 procedure. Floor reflectances are 20%. Lamp configurations shown are typical. All data based on 25°C. Full response LTL 1812B these and other configurations available upon request.

LUMINAIRE CATALOG NO.: Z132 MV
LUMENS PER LAMP: 2800

C232 MV
TEST NO: LTL 5181
LUMENS PER LAMP: 2900

C296
TEST NO: LTL 18310
LUMENS PER LAMP: 6300

RCR	Coefficients of Utilization											
	pf	pc	80%			70%			50%			
			50%	30%	10%	50%	30%	10%	50%	30%	10%	
0	107	107	107	102	102	102	92	92	92			
1	87	82	77	83	78	74	75	71	68			
2	74	66	60	70	63	57	63	58	53			
3	64	55	48	61	53	46	55	48	43			
4	56	47	40	53	45	38	48	41	35			
5	49	40	33	47	39	32	42	35	30			
6	44	35	29	42	34	28	38	31	26			
7	40	31	25	38	30	24	34	27	22			
8	36	28	22	34	27	21	31	25	20			
9	33	25	19	31	24	19	29	22	18			
10	30	22	17	29	22	17	26	20	16			

RCR	Coefficients of Utilization											
	pf	pc	80%			70%			50%			
			50%	30%	10%	50%	30%	10%	50%	30%	10%	
0	106	106	106	102	102	102	93	93	93			
1	89	84	79	85	80	76	78	74	71			
2	76	68	62	72	66	60	66	61	56			
3	65	57	50	62	55	49	57	51	45			
4	57	48	42	55	47	40	50	43	38			
5	51	42	35	48	40	34	44	37	32			
6	45	36	30	43	35	29	40	33	28			
7	41	32	26	39	31	25	36	29	24			
8	37	29	23	35	28	22	33	26	21			
9	34	26	20	32	25	20	30	23	19			
10	31	23	18	30	23	18	28	21	17			

RCR	Coefficients of Utilization											
	pf	pc	80%			70%			50%			
			50%	30%	10%	50%	30%	10%	50%	30%	10%	
0	103	103	103	98	98	98	90	90	90			
1	86	82	78	82	78	74	75	72	69			
2	74	67	61	70	64	59	64	59	55			
3	64	56	49	61	54	48	56	49	44			
4	56	47	41	53	46	40	49	42	37			
5	49	41	35	47	39	34	43	37	31			
6	44	36	30	42	34	29	39	32	27			
7	40	32	26	38	30	25	35	28	24			
8	36	28	23	35	27	22	32	25	21			
9	33	25	20	32	25	20	29	23	19			
10	30	23	18	29	22	18	27	21	17			

Zonal Lumen Summary			
Zone	Lumens	% Lamp	% Fixture
0° - 30°	356.4	12.7	13.5
0° - 40°	603.9	21.6	22.9
0° - 60°	1198.3	42.8	45.5
0° - 90°	2029.3	72.5	77.1
90° - 180°	602.8	21.5	22.9
0° - 180°	2632.0	94.0	100.0

Zonal Lumen Summary			
Zone	Lumens	% Lamp	% Fixture
0° - 30°	842.1	14.5	15.6
0° - 40°	1435.8	24.8	26.7
0° - 60°	2810.1	48.4	52.2
0° - 90°	4362.5	75.2	81.0
90° - 180°	1021.0	17.6	19.0
0° - 180°	5383.6	92.8	100.0

Zonal Lumen Summary			
Zone	Lumens	% Lamp	% Fixture
0° - 30°	1785.8	14.2	15.7
0° - 40°	3042.4	24.1	26.8
0° - 60°	5944.0	47.2	52.3
0° - 90°	9027.5	71.6	79.4
90° - 180°	2341.8	18.6	20.6
0° - 180°	11369.4	90.2	100.0



Lithonia Lighting
Fluorescent
 One Lithonia Way, Conyers, GA 30012
 Phone: 770-922-9000, 800-315-4963, Fax: 770-602-1531
www.lithonia.com